

R•O•M RoadwarriorR Ramp Reversal Instructions

Introduction

R•O•M RoadwarriorR ramps are designed to be flipped over halfway through their life-cycle to provide a fresh walking surface. This work instruction will guide you through the steps necessary to reverse a RoadwarriorR ramp.

IMPORTANT: Read this manual completely before reversing the ramp. The ramp and optional lift assist are heavy when they are packaged together and could cause serious injury if mishandled or improperly installed.

The reversal of the ramp is not difficult if you follow the procedures outlined in this manual. Any unauthorized changes to these procedures, changes to the parts and/or assemblies will automatically void our warranty.

If you have any questions call 800-827-3692.

Installation – Tools & Equipment (not included)

- 5/32" Allen Wrench
- 7/16" Socket
- 7/16" Open End Wrench
- 1/2" Socket
- 5/8" Open End Wrench
- Torque Wrench
- Metal File
- Thread Locker Blue
- Rubber Mallet
- 9/16" socket

Additional Requirements (not included)

- Tie Rod Replacement Kit

1. Removing the Roadwarrior Ramp Apron or Lift Assist Apron

- a. Using the 7/16" wrench and socket, remove the six screws holding the apron to the ramp rails as shown in Fig. 1.
- b. Flip the ramp over so the roller housing is on top. *Note: Lift Assist Ramps and Sidekick Folding Ramps do not have roller assemblies.* The roller housing can be removed by removing the cotter pin or cotter circle from the clevis pin that goes thru the roller. With the roller parts removed the roller housing and apron support plate can now be removed using a 7/16" wrench and socket.

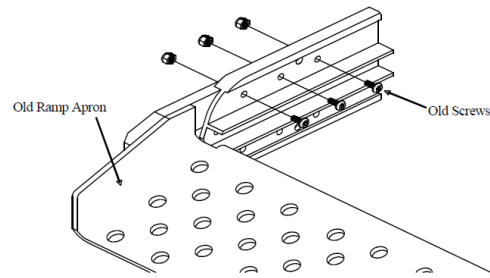


FIG. 1

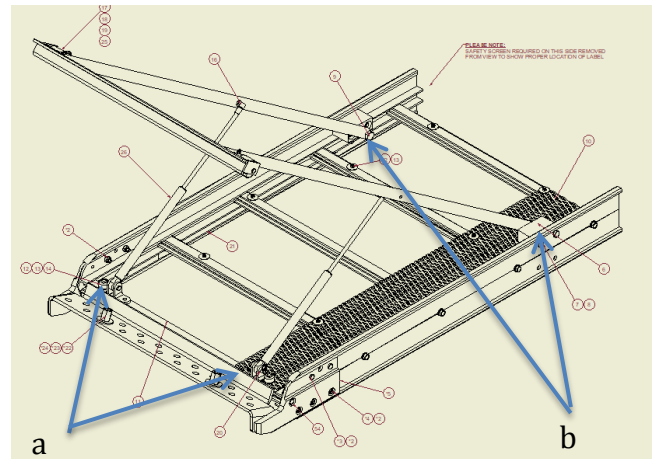
The support plate and mounting hardware can be discarded but the housing, roller, clevis pin and washers will be reused. New cotter circles have been provided.

- c. Using a 1/2" socket remove the two 5/16-18 hex head tie rod screws from the first tie-rod. Remove the tie rod and these discard parts along with the washers.

Notice: Non-lift assist ramps will come with rollers on the front end of the ramp, these will also need to be removed and placed on the opposite side of the ramp when it is flipped over.

2. Removing Lift Assist (If Applicable)

- a. Remove clevis pins from upper gas shock mounting point, discard of tie rod.
- b. Remove four 3/8"-16 bolts holding pivot blocks using 9/16" socket
- c. Remove lift assist from ramp and set aside.



Flip Ramp to Opposite Side

- a. Flip ramp over so that un-used walk surface is facing downward.

Installing the New Roadwarrior Ramp Apron or Lift Assist apron

- Using a metal file remove any burrs that may be on the end of the ramp rail as shown in Fig. 2; burrs can cause interference and not allow the apron to install smoothly.
- Install new tie rod then slide new apron onto end of ramp (Fig. 3). You may need to tap it lightly with the rubber mallet if it is a tight fit.

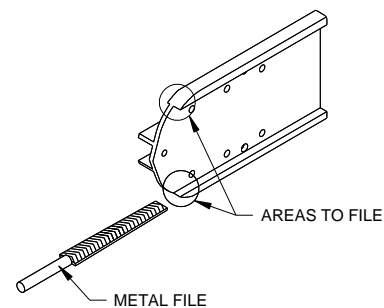


FIG. 2

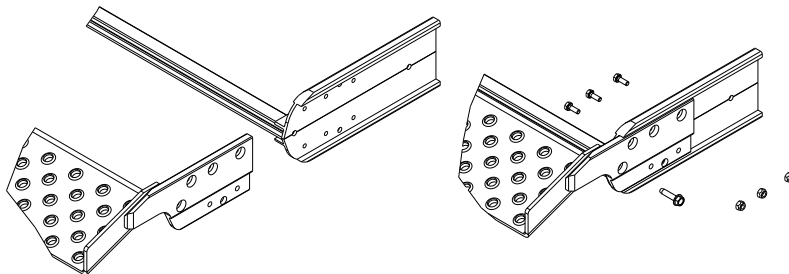


FIG. 3

- Install (6) 1/4"-20 x 3/4" Hex Head Cap Screws and (6) 1/4"-20 nylon lock nuts, with the heads on the inside of the rails as shown. Use the 7/16" wrench and socket to loosely install the hardware. *Do not fully tighten the fasteners at this time.*
- Place the 1/4"-20 x 1" Hex Head Cap Screws through the holes in the apron that correspond to the holes in the roller housing and tighten the 1/4"-20 Nylon Insert Stop Nuts on the inside of the roller assembly bracket. Reinstall the roller by referencing Fig. 4 for proper configuration.

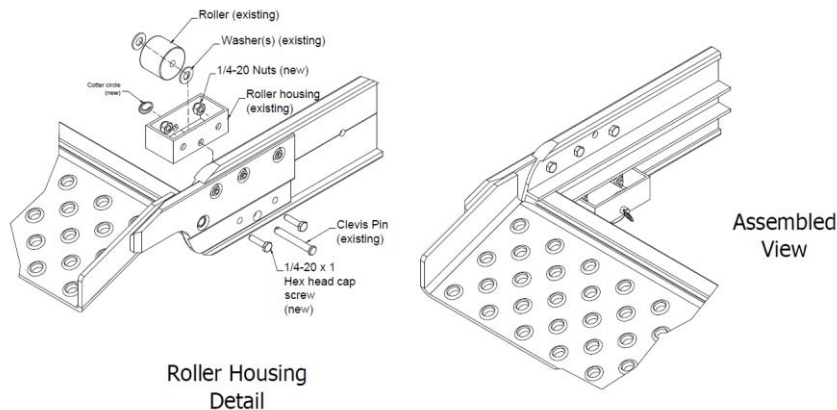


FIG. 4

Note: Lift Assist Ramps and Sidekick Folding Ramps do not have roller assemblies on the rails. Older style sidekicks will fasten thru the U-shaped latch catch as well as the ramp rail.

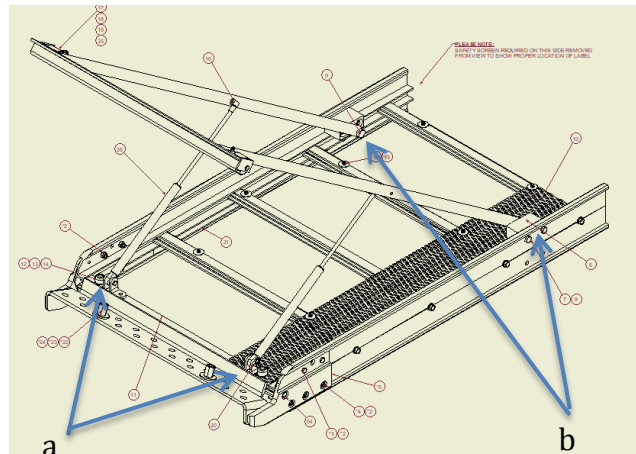
- Install the two 5/16"-18 x 2" hex head tie rod screws thru the apron arms and rails into the tie rod using a 1/2" socket and torque wrench.

CAUTION: DO NOT over-tighten the screws. Over-tightening the screws may cause them to break off within the extrusion; R•O•M recommends 22 ± 2 ft. lbs. of torque.

- Lastly tighten all apron bolts.

Installing Lift Assist (If Applicable)

- a. Attach pivot blocks to ramp rails using four 3/8"-16 bolts.
- b. Attach gas springs to front tie rod using clevis pins.
- c. Your ramp is now ready for use.



IMPORTANT: Check the entire ramp including all bolts, cotter pins, and fasteners for tightness and integrity. Also ensure there are no broken or cracked castings, and the ramp rails are in good condition.

If you have any questions or problems, please contact your Customer Development Representative at 800-827-3692.

These drawings & the information contained herein are the confidential & proprietary intellectual property of R•O•M and should not be disclosed to any third party without the express prior written consent R•O•M.