

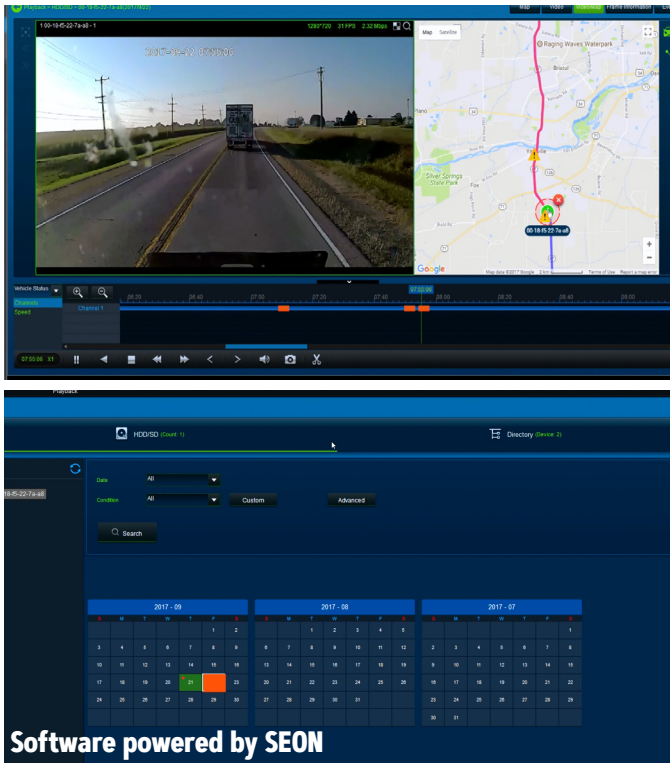
# DS SERIES: EVENT RECORDING SYSTEM

Choose your view. Download video on-demand. Protect your drivers and your business.



**DS1:** Forward Facing Camera with recording software integrates with real-time GPS telematics; recording what's happening on the road protects your driver and your business should an incident occur.

**DS2:** Driver and Forward Facing Camera with recording software integrates with real-time GPS telematics; recording both the driver and the road provides a complete view of the driver experience.



## FEATURES

- Integrated video, telematics, and vehicle operating data on a single screen
- Driver behavior: hard braking, hard stops, hard acceleration, idling time, location, and sudden deceleration
- Built-in G-force sensors, GPS, and audio
- Ability to playback video before, during, and after an incident
- Continuous and event-based recording
- Built-in digital video recorder (DVR) with SD card capacity up to 512 GB

## The Capabilities

### Built for Fleets

Continuous or event-based recording with configurable inputs and alarms to support fleet work-flows.

### Fast Boot

Video starts recording within 10 seconds of start-up.

### Full Location History

Built-in GPS displays path traveled and vehicle location on a map synchronized with camera views.

### Complete Event View

View cameras, GPS & telematics all on one screen.

### Solid State Recording

No moving parts with up to 466 hours of video/event data recording.

### Super-Cap Power

Protects video recorded in case of sudden power loss such as an accident.

## Specifications

Video	
Recording	Channels 2 HD video, 2 audio
Camera Focal length	Camera 1 = 4.0mm, Camera 2 = 2.6mm
Video Resolution	720p or 360p progressive scan
Second Stream Video Resolution	360p or 180p progressive scan
Maximum Frame Rate	Up to 25 FPS per camera; Camera 1 & Camera 2 @ 720p Main Stream (Second stream enabled) Up to 30 FPS per camera; Camera 1 & Camera 2 @ 720p Main Stream (Second stream disabled)
Quality Settings	Adjustable, 8 levels; 1 (best) ~ 8 for alarm recording
Overwrite Modes	Auto overwrite, No overwrite, Minimum days (1 - 31)
Display Modes	Single camera or two cameras simultaneously
Playback Rate	Frame advance, FFD up to 16x, Slow FWD ½ to 1/16
Search Function	Time & Date, by channel, alarm
On Screen Display	Time, speed, vehicle number, GPS, channel name, device ID, position
Video Playback	MS Windows-based video player
Storage	
Media	SD Card, security cover (removable)
Capacity	Up to 512 GB
Input/Output	
Network Interface	Wifi
Sensor	2 inputs active Hi or active Lo
Electrical	
Voltage Range	8 - 32 VDC
Transient Protection	700 W per signal input
Mechanical Dimensions	
Forward Camera/Recorder	98 x 58 x 37 mm
Weight	3 lbs (including two cameras, recorder, cabling and power source)
Operating Temperature	-40F to +158F (-40C to +70C)