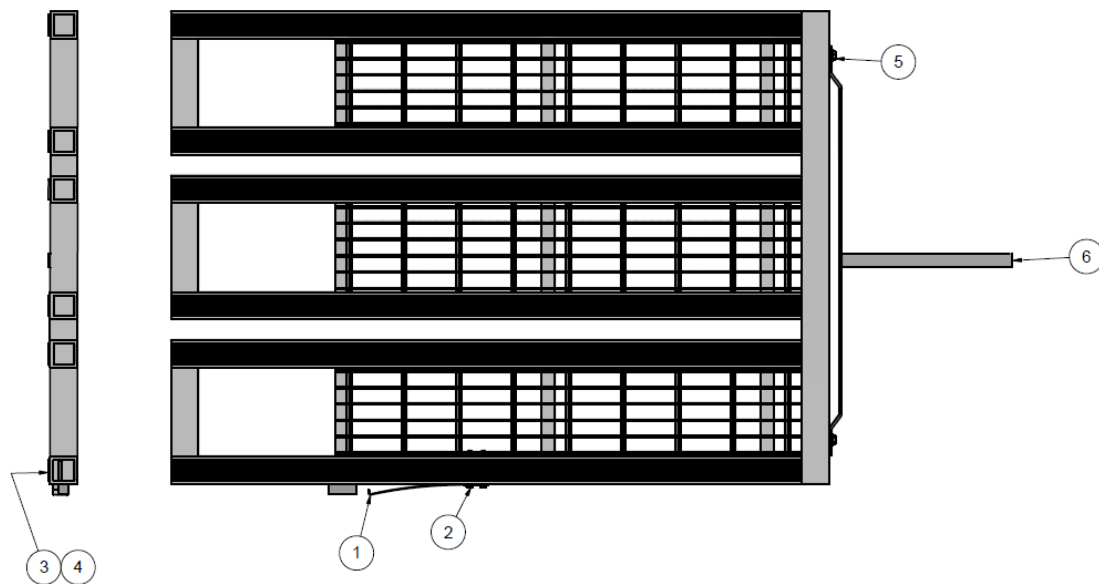


## Bustin Split Platform Preventative Maintenance & Usage Guidelines

This Preventative Maintenance and Usage guideline is to inform users that regular inspection of your platform and steps must be completed every three months and it's advisable that drivers inspect the platform and steps daily before use. Using a damaged platform and steps could result in bodily injury. Use only R•O•M replacement parts for repairs call 800-827-3692.

Inspect the flat spring (1), make sure that the spring locks the platform when in a deployed position, check the screws (2) holding the spring to ensure they are tight. Ensure that the tunnel's left and right stop screws are present and tighten so they stop the platform from being pulled completely out of the tunnel. Visually inspect the welds and plastic slide strips (3) underneath the deck and rivets (4). Check the fasteners (5) mounting the ramp hookup bar. Inspect pull out strap (6) for wear and tear out.

Stressing and or excessive wear can be an indication of fatigue. Any components showing these signs should be replaced immediately.



**IMPORTANT:** R•O•M also recommends that the platform be used on a level surface. Be sure to regularly inspect your platform for loose fasteners, and repair or replace damaged parts. Any parts that are damaged or loose can cause serious injury. Improper usage of the platform can cause damage and possibly void any remaining warranty. Please contact your Customer Development Representative at 800-827-3692.